

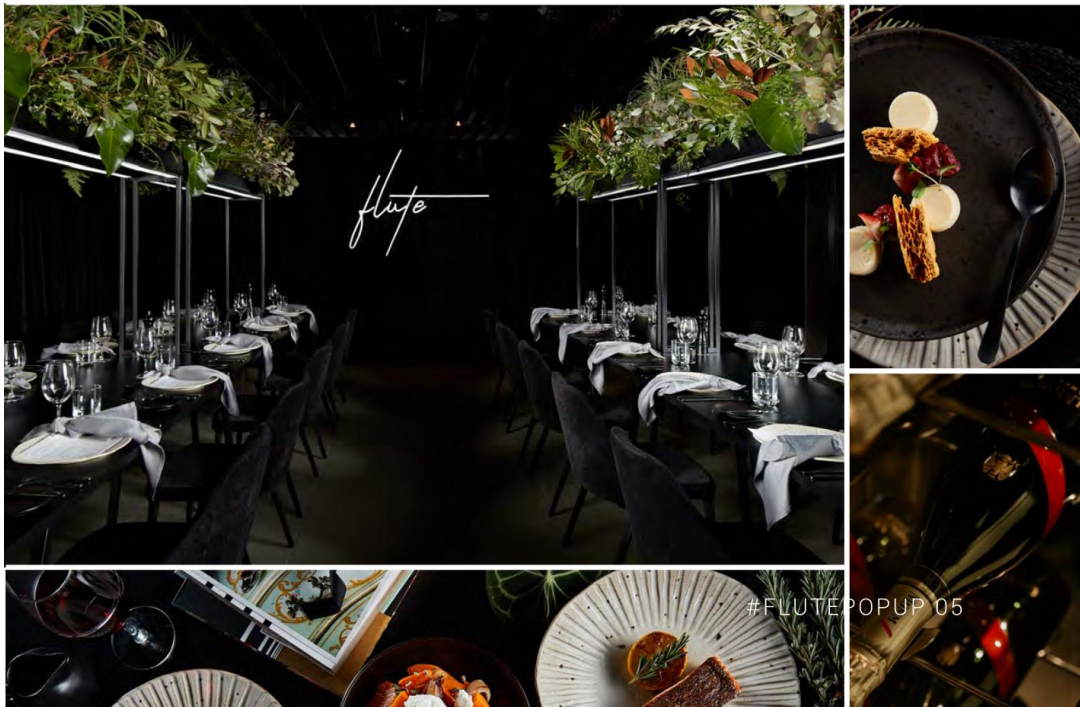
Australian Acoustical Society

VICTORIA DIVISION

A.C.N. 000 712 658

The Victoria Division of the AAS End of Year Christmas Function

The Victorian division of the Australian Acoustical Society invites you and your partner to our end of year Christmas function at Flute Private Dining Melbourne.



A SENSORY DINING EXPERIENCE

The dramatic room assures a premium dining experience where food can truly be the hero.

Flute 2018 is minimalism paired with a striking colour palette of high-end hues. Luxurious ambiance will encompass a modern design and a festive flavour to create the finest one-of-a-kind private dining experiences. Set within the opulent backdrop, Executive Head Chef, Paul Griffiths acts as the backbone to the Flute Private Dining team, showcasing a refined menu of upscale seasonal dining. You will have the choice of the following:

Entree

High Country Pork Belly, Smoked Beetroot, Eggplant Caviar, Carrot Puree
Pumpkin Tortellini, Caramelised Figs, Asparagus, Pea Puree
Salmon Ceviche, Bloody Mary Jelly, Crab Salad, Cucumber, Horseradish Creme Fraiche

Mains

Lamb Rack 3 Points, Victorian Farmers, Vic
Free Range Chicken Breast 220g, Hazeldene Birds, Vic
Vegetarian Tasting Board - Chef's Selection

Sides

Pumpkin, Charred Red Onion, Sage, Goat's Cheese or
Corn, Peas, Raisins, Smoked Almond, Mint, Cous Cous Salad

Victoria Division of the Australian Acoustical Society

Date: Wednesday 5th December 2018

Time: From 6pm, for 7pm Dinner

Venue: 186 Exhibition Street, Melbourne 3000

What: Canapes, two course meal, and a few drinks

Cost: Members and their partners \$50 per person (AAS subsidy \$50 per person)
Non-members \$100 per person

Payment via EFT prior to the event is preferred. Alternatively, payment can be made to Laura Lapena in cash on the night.

Account Name: Victoria Division of the AAS

BSB: 033-365

Account No: 23-2358

Please ensure that you include your name in the transfer description and send remittance advice to vic-secretary@acoustics.asn.au

Invoices / receipts will be provided on request.

RSVP to vic-secretary@acoustics.asn.au by COB Thursday 20 November 2018

Getting There:

Enter via Rydges Melbourne Hotel Lobby (Exhibition St between Bourke and Little Bourke)

Take lifts to Level One

By Tram:

Tram Routes 96 to Stop 7 and 86 to Stop Parliament Station.

Nearest train station:

Parliament Station (approx. 250m away)

Driving:

On-street parking is available, there is parking at the Rydges Hotel and many other location nearby.

